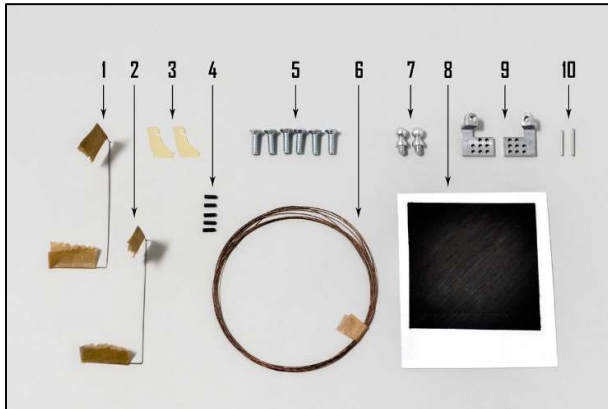
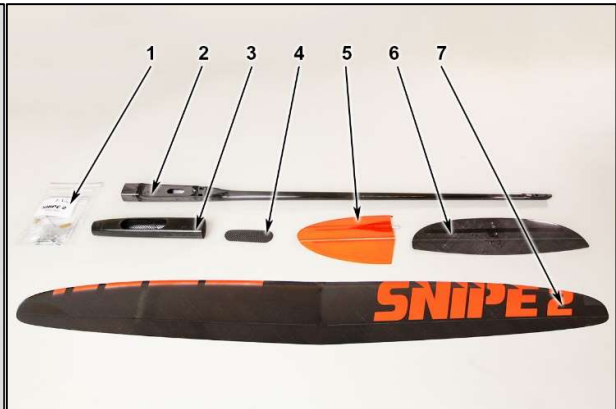


1. The list of parts and materials to build:

Accessory kit:



Parts set:



1. Elevator spring;
2. Rudder spring;
3. Snipe 2 electric elevator and rudder control horns;
4. Pipes for the fixing control cables (1pc is spare);
5. Screws for wing and rudder M3x10 ( 3pcs are spare)
6. Snipe elevator and rudder control steel cable;
7. Snipe 2 aileron ball head aluminum screws (2 pcs);
8. Carboline SC 78 4/30 carbon for fixing aileron horn pins;
9. Snipe 2 aluminum aileron control horns set (left and right);
10. Aileron horn pins (2 pcs).
11. Accessoires of Snipe 2 El kit;
12. Tail boom;
13. Fuselage;
14. Canopy;
15. Rudder;
16. Horizontal stabilizer;
17. Wing.

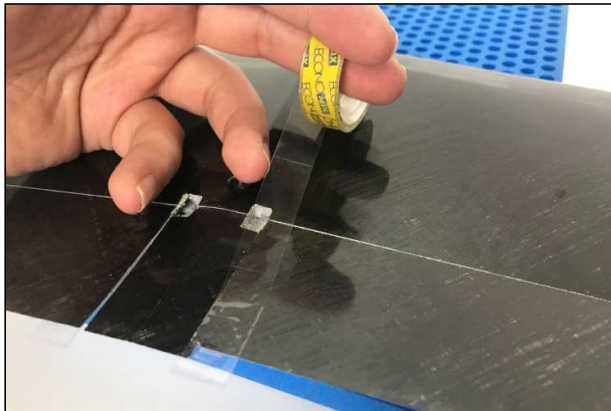
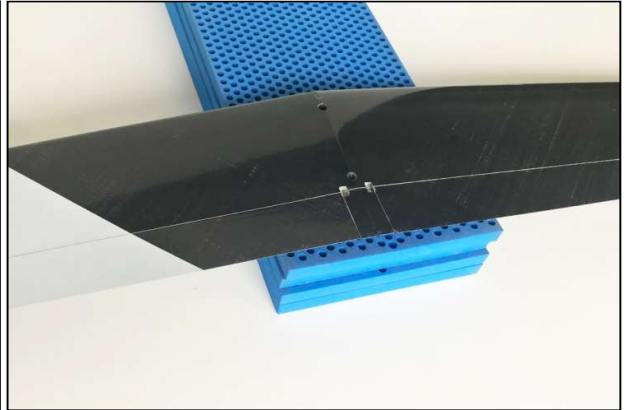
The list of materials needed to build the model:

- 1) Superglue and liquid medium, the accelerator
- 2) Cutter
- 3) Masking tape
- 4) Pen and ruler
- 5) Pliers
- 6) Sandpaper number 240-320

## 2. Assembling the model

### 2.1 Aileron horns installation.

This is very important sequence to follow for successful control installation.



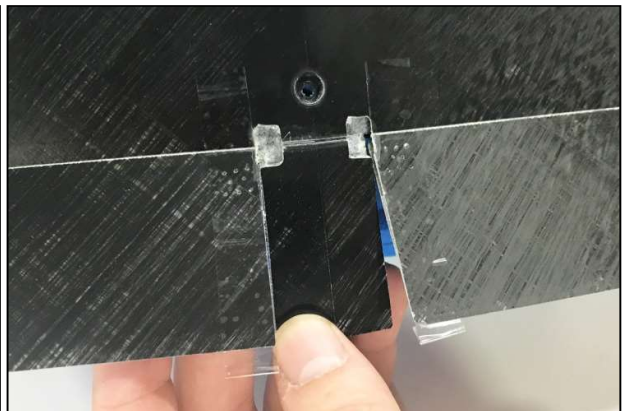
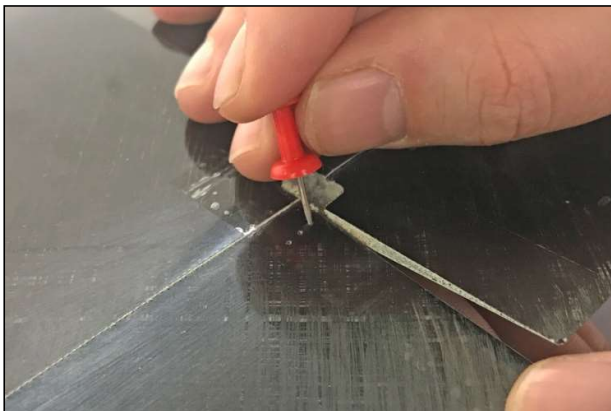
Place a small piece of tape on bottom of flap over control horn and make small hole in flap with pin for glue hole.

### **CAUTION!**

Gluing zone of aluminium horn is covered with primer for epoxy and CA!



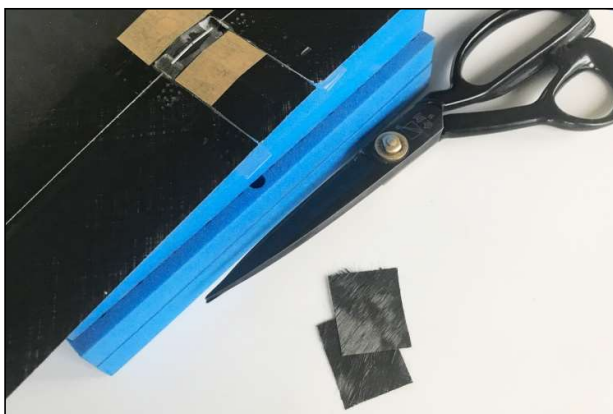
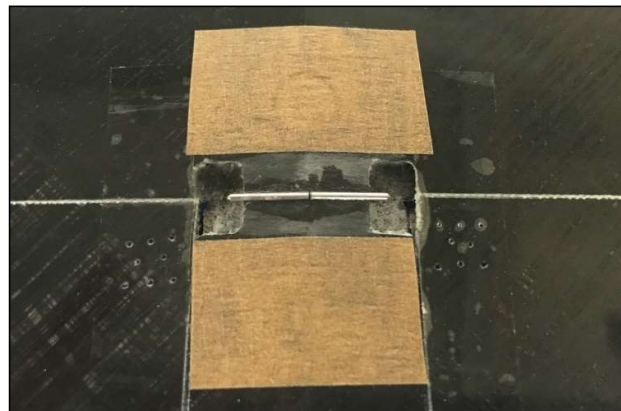
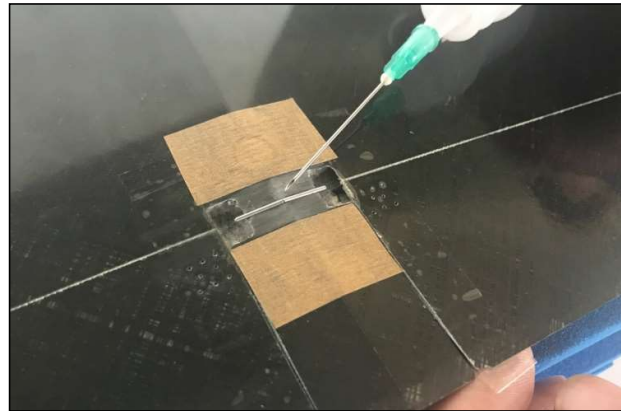
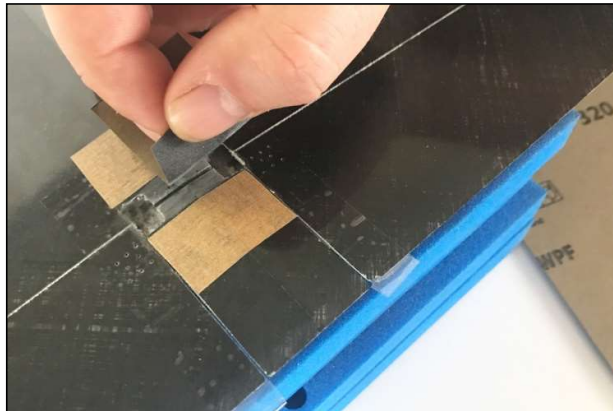
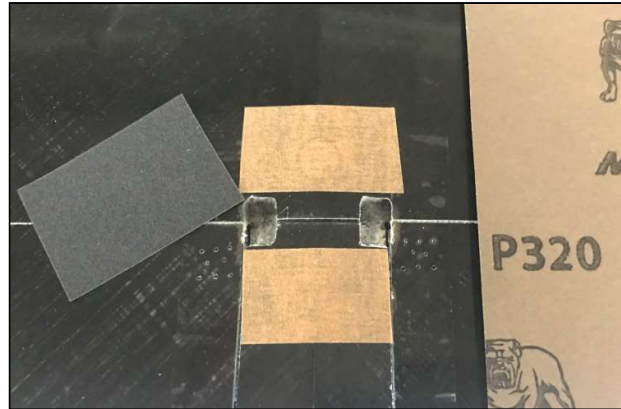
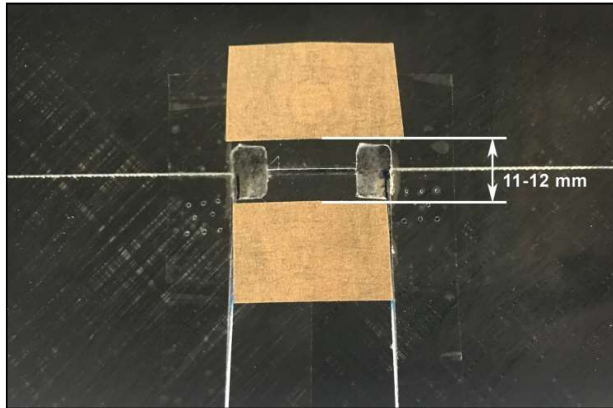
**DO NOT TOUCH  
THIS SPOT!**



# SNIPE 2 EL

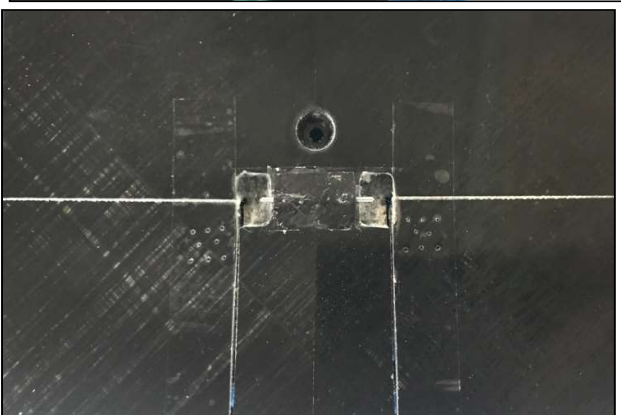
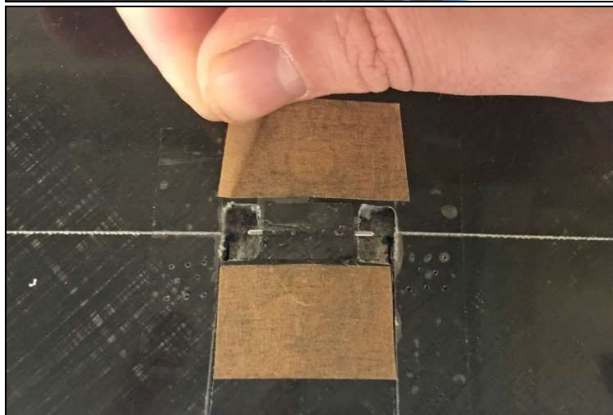
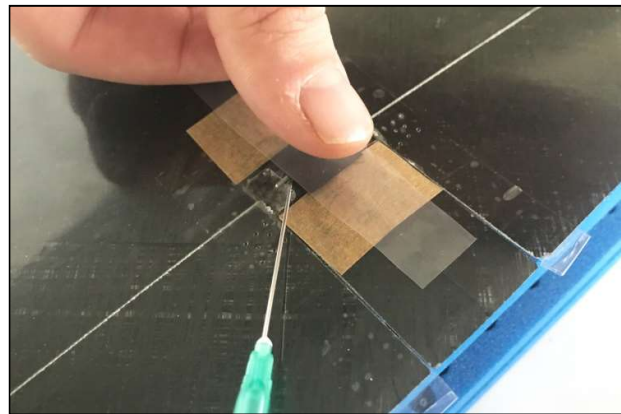
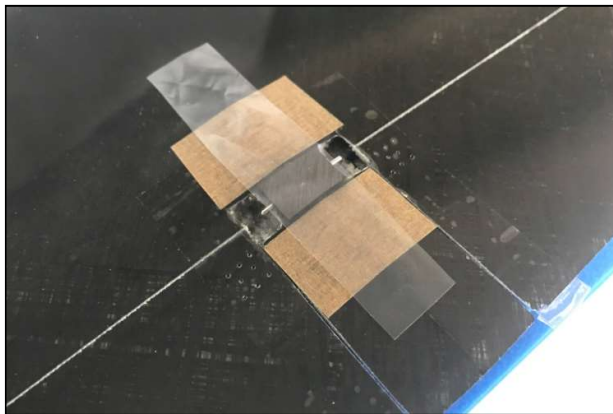
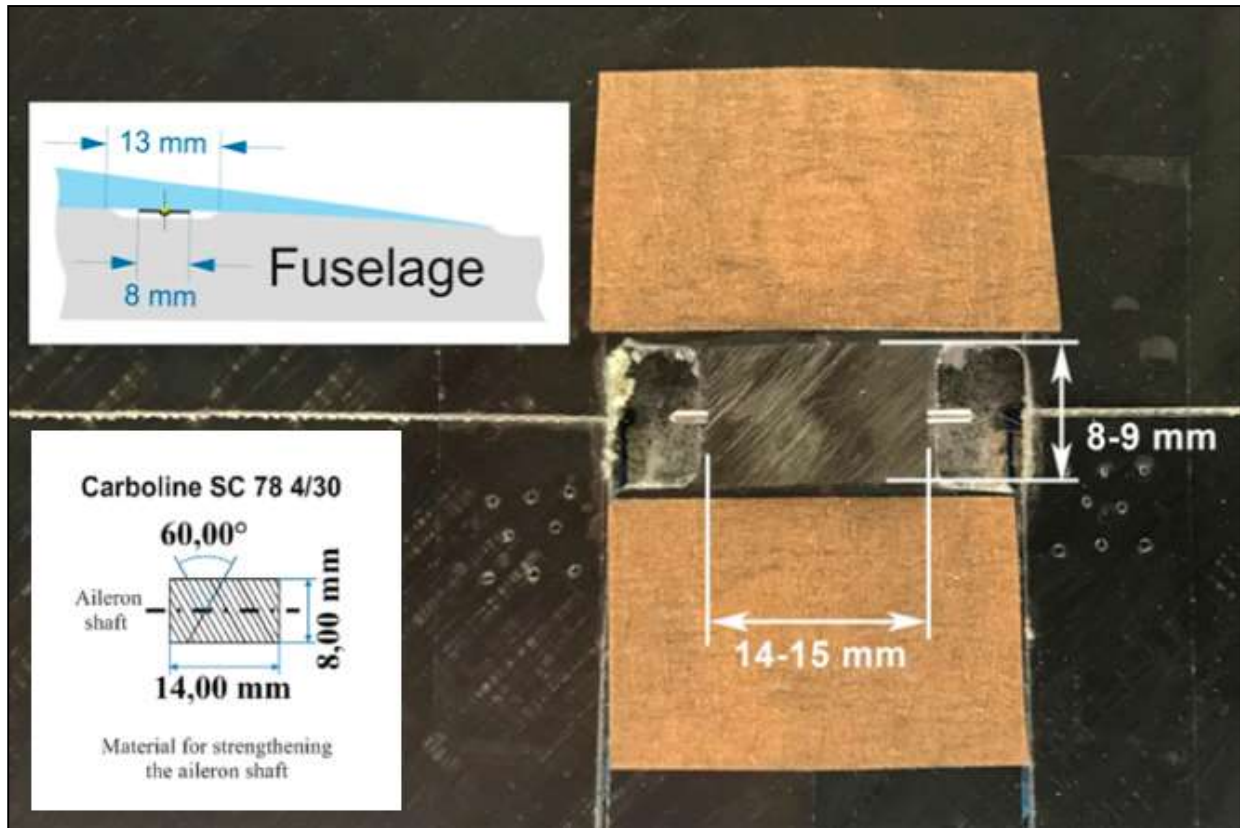
## Recommendations for assembly

Glue pins in groves at bottom of wing.



Reinforce aileron's pins by 2-3 layers of Carboline SC 39 2/45 (8x14 mm).

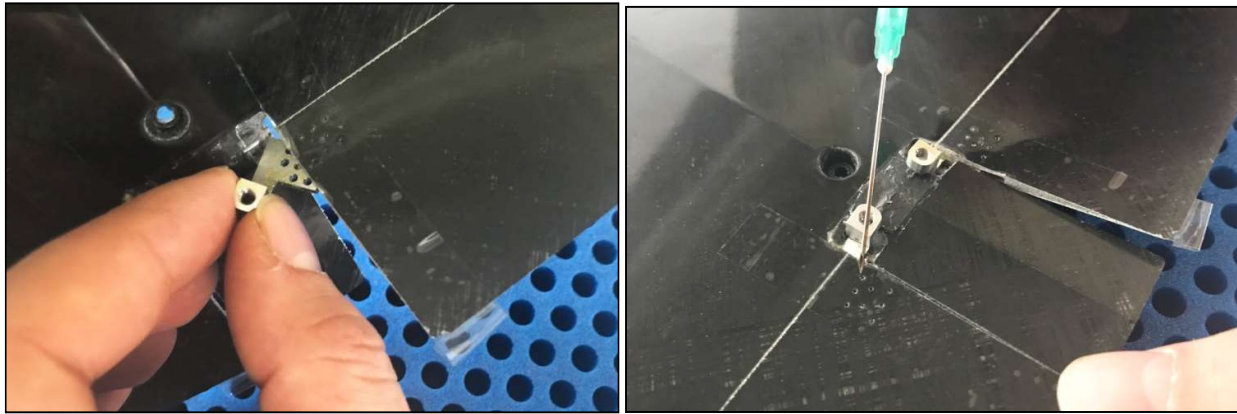
# SNIPE 2 EL Recommendations for assembly



# SNiPE 2 EL

## Recommendations for assembly

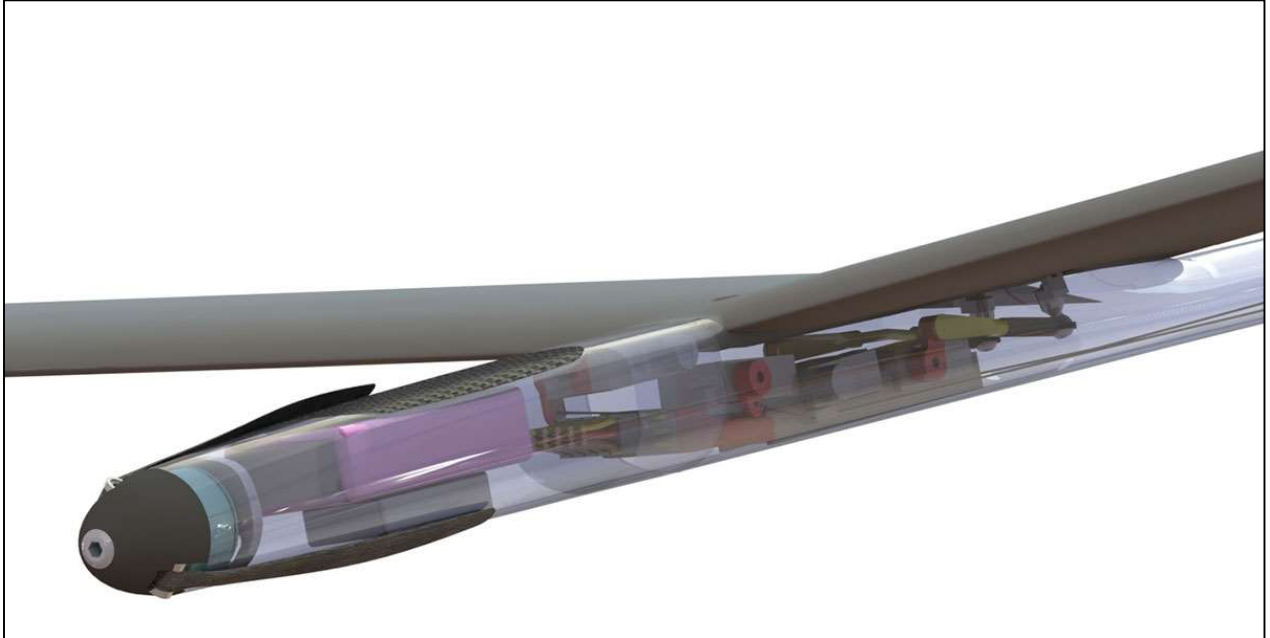
Then slide control horn into slot in flap. Next, slide control horn on pin and push horn to inside edge of hole, toward center of wing. Leave just enough clearance between horn and hole so the horn does not scrape edge of hole.



Use some thin CA and drip glue into pin hole. When CA is dry, remove tape. Pull flap down and fill space around control horn with CA.



## 2.2 Snipe 2 EL Fuselage.



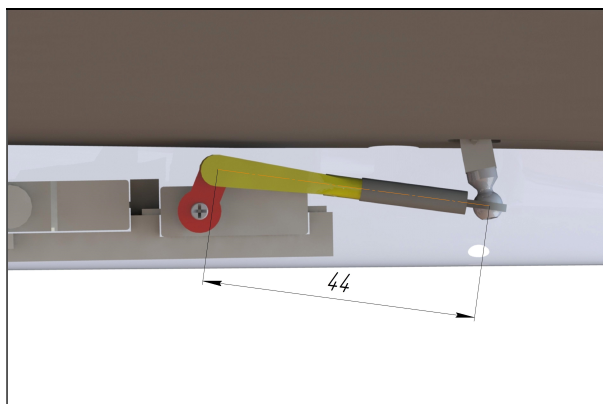
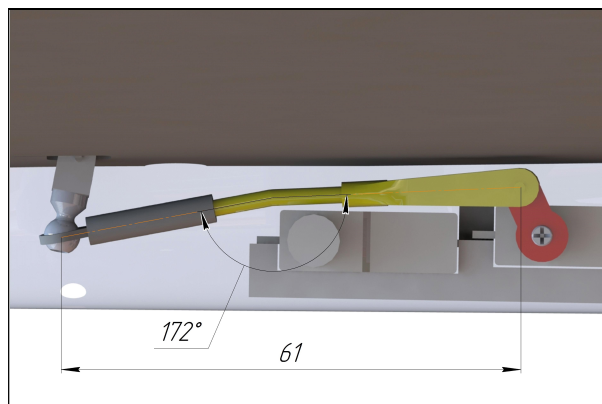
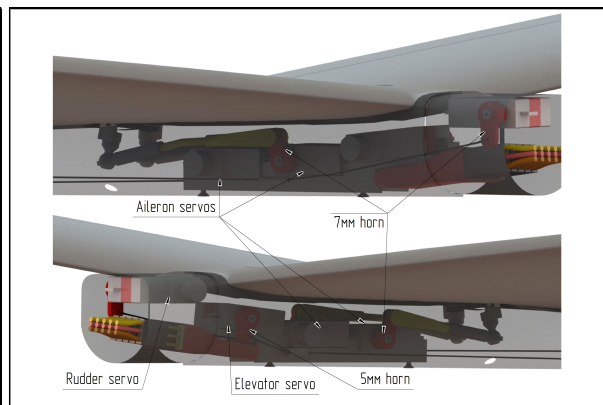
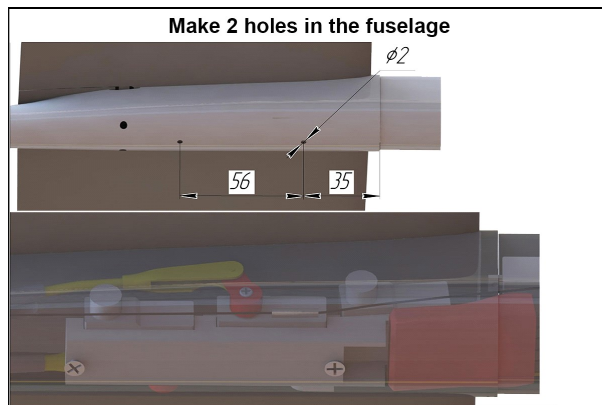
Cut the back side of nose for get right CG position



Motor plate is ready for motor 1806

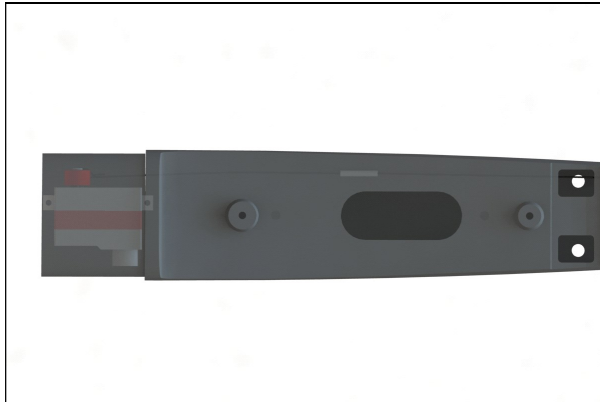
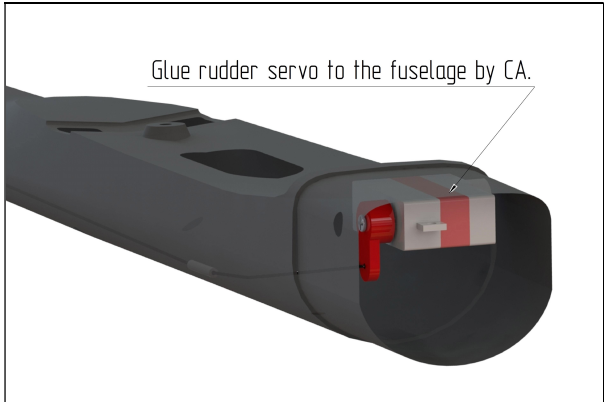
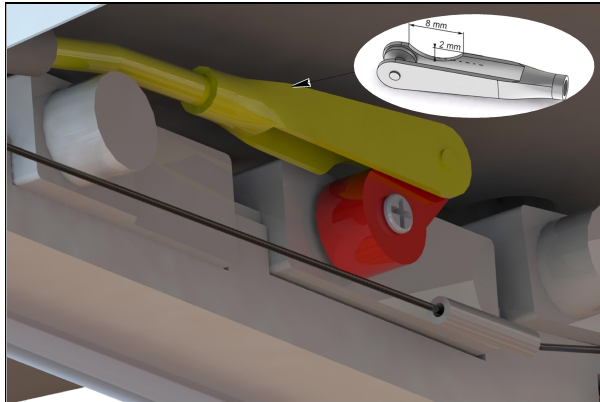
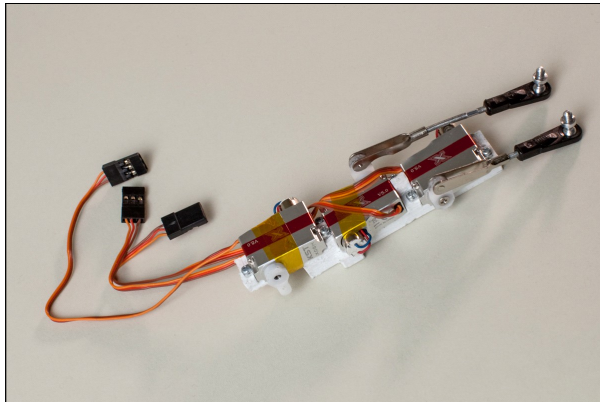


### 2.3 Snipe 2 Electric fuselage KST x08h mount plate



# SNIPE 2 EL

## Recommendations for assembly



**Brake stick**  
(Intermediate position)

**Aileron stick**  
(Neutral position)

**Servo monitor**  
Left ail. Right ail.  
0% 1500 ms 0% 1500 ms

**MODE 2**



## 2.4 Snipe 2 EL Tail

